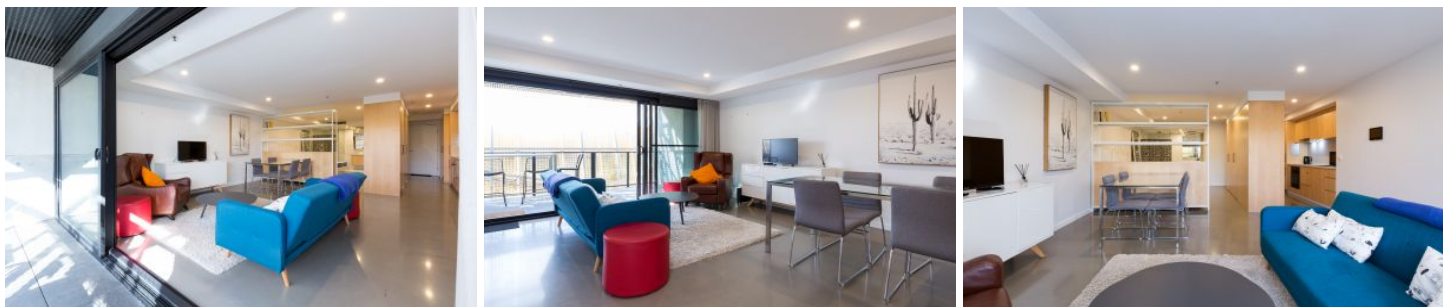


# CARTER + CO



## 506/25-27 Lonsdale Street Braddon ACT

1 1

Located on the ever popular Lonsdale Street, this fully furnished apartment offers easy modern living within walking distance to absolutely everything.

The floor-plan has been cleverly designed to make the most of the space, offering a galley style kitchen with an unexpected amount of storage that leads the way to a bright open plan living and dining space.

The bedroom area is separated by built in shelving, keeping the area hidden from the living space. The bathroom is open access, with a large shower and separate toilet.

The 'Nibu' building offers modern, up-market architecture and is designed to create a quiet oasis in Canberra's central suburb.

**View :** <https://www.carterandcoagents.com.au/lease/act/inner-north/braddon/residential/apartment/582852>



**Emma Barclay**  
02 6176 3443



**Lauren Tye**  
02 6176 3443