

CARTER + CO



521/27 Lonsdale Street Braddon ACT

2 2 2

Located in the heart of the rapidly growing Braddon retail precinct, this two-bedroom penthouse offers a truly special opportunity.

An architectural masterpiece, Palko is a true flagship of Braddon's transformation - an aesthetically breathtaking building that undeniably offers a new level of unsurpassed luxury. New York-inspired, this boutique development is home to only 47 apartments, all designed to create a unique high-quality living environment.

Spread over two levels and comprising of 133m2 (approx.) of internal living, Unit 521 showcases a functional design, ensuring spacious family living is achieved with ease. Upon entrance, the stark quality of the apartment is clear. Hardwood timber floors and stairs and feature polished concrete walls are just some of the design features which

View : <https://www.carterandcoagents.com.au/sale/act/inner-north/braddon/residential/apartment/5828557>

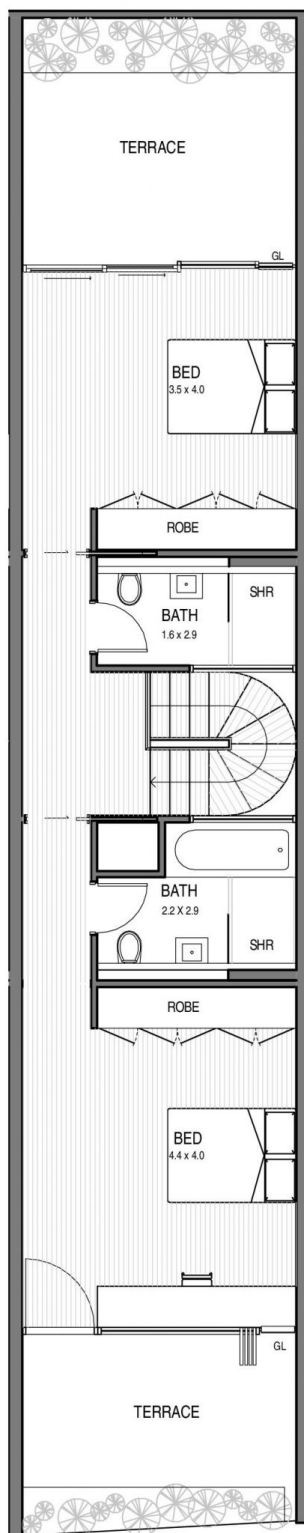
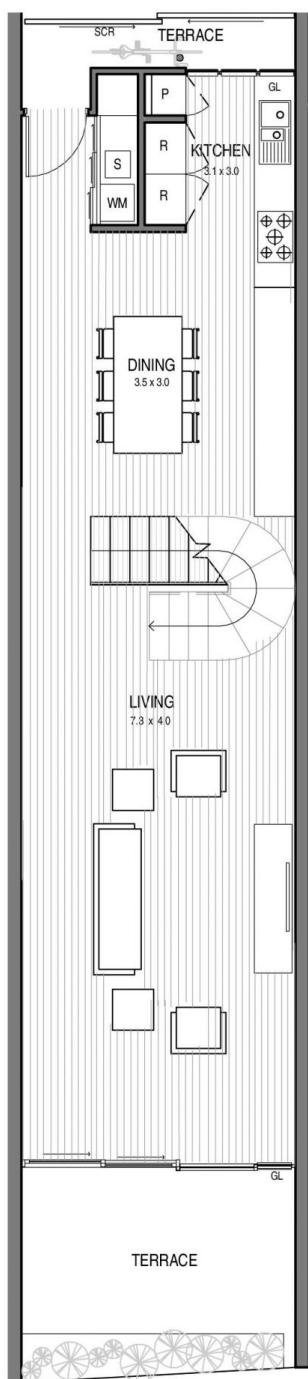


James Carter
02 6176 3443

PAIKO APARTMENTS

0
1
2
3
4

5m NORTH



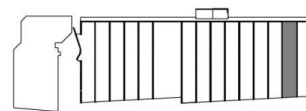
25-29 LONSDALE ST
BRADDON ACT

HINTON+
nathan gibson judd architect

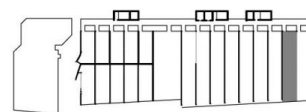
UNIT TYPE **R46 6**

INTERNAL AREA : 133.0m²
PRIVATE OUTDOOR SPACE : 37.0m²
TOTAL : 170.0m²

GL : GLASS LOUVRES
R : REFRIGERATOR
SCR : PRIVACY SCREEN
SHR : SHOWER
S : LAUNDRY SINK
P : PANTRY
VS : VERTICAL SLIDING WINDOW
WM : WASHING MACHINE



LEVEL 6



LEVEL 5

03/12/2014 REVISION: 2

DISCLAIMER:

The area of each unit is calculated to the outside of the external walls and centre of common walls in accordance with ACT/PLA Gross Floor Area Guidelines. Areas are rounded to the half square metre.

Dimensions given on the plans are to the face of walls.

Buyers are responsible for verifying and ensuring that the drawings and information obtained from this document is the latest version.

We reserve the right to change the drawings and any information contained in the document.

By accessing or receiving this document you agree to the above terms and conditions.