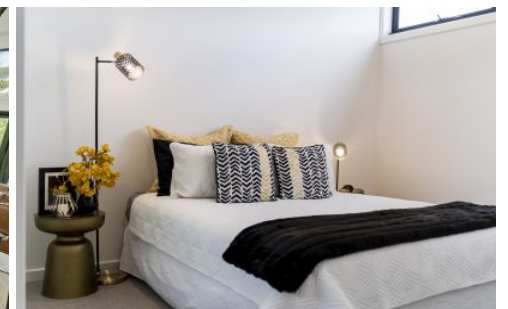
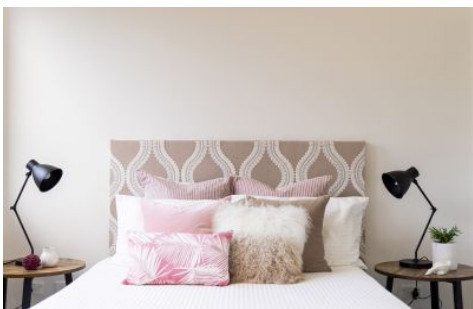


CARTER + CO



8/28A Dooring Street Braddon ACT

3 2 2

Nestled on a tree lined street this home features three bedrooms, two and a half bathrooms and a two car garage with internal access. Located within close proximity to the vibrating hubs of the Braddon, Dickson and Ainslie precincts, with the light rail stop being only a stone's throw away for access to the CBD and beyond.

The bedrooms are oversized and can easily accommodate a king size bed they also comes fitted with additional data and TV points. The garage features internal access into the sun-drenched living and dining room.

Residence 8 at The Kew in Braddon was developed by Project Coordination one of Canberra leading developers. Completing some of Canberra's most iconic projects such as the National Arboretum and the Audi centre in Phillip. A contemporary kitchen is equipped with everything you

Price : \$930,000 - \$980,000
Building Size : 128 sqm
View : <https://www.carterandcoagents.com.au/sale/act/inner-north/braddon/residential/ownhouse/5828684>



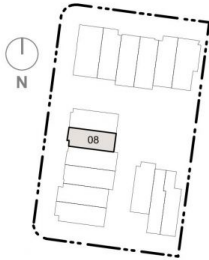
James Carter
02 6176 3443



Nik Brozanic
02 6176 3443

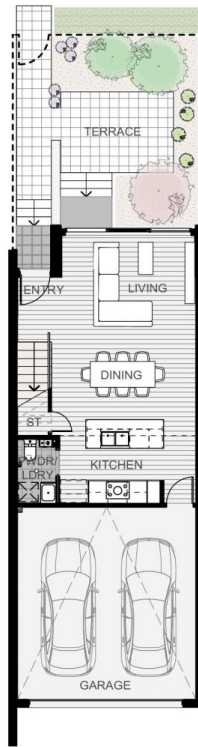
128m²

Unit	8
Bedroom	3
Bathroom	2.5
Garaged Car	2
Internal (sqm)	128
External (sqm)	42

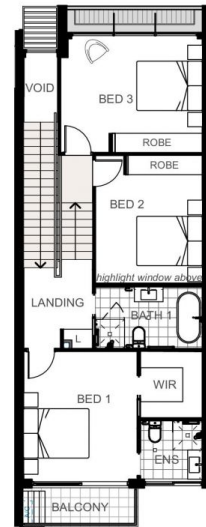


Scale at A4 1:150

Disclaimer: Floor plans may not be to scale, are indicative only and are subject to the intending purchaser's own advice and enquiries. All plans are subject to Development Application Approval. Layout may be subject to minor amendments and dimensional changes to suit final working drawings and grid layouts which are subject to the Building Code of Australia. The area of each unit is calculated using ACTPLA guidelines. It is the buyer's responsibility to verify and ensure that the drawings displayed are the latest versions available.



Ground Floor



First Floor

