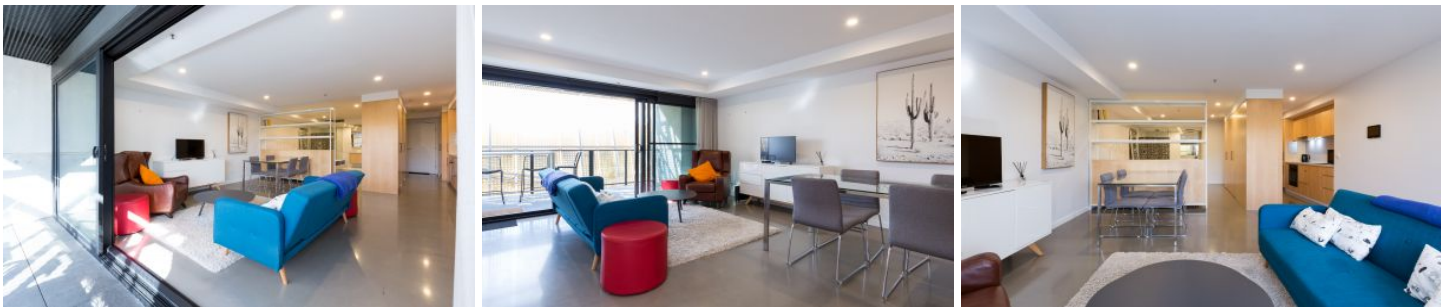


CARTER + CO



506/25-27 Lonsdale Street Braddon ACT

1 🏠 1 🚗

Located on the ever popular Lonsdale Street, this fully furnished apartment offers easy modern living within walking distance to absolutely everything.

View : <https://www.carterandcoagents.com.au/lease/act/inner-north/braddon/residential/apartment/6519634>

The floor-plan has been cleverly designed to make the most of the space, offering a galley style kitchen with an unexpected amount of storage that leads the way to a bright open plan living and dining space.

The bedroom area is separated by built in shelving, keeping the area hidden from the living space. The bathroom is open access, with a large shower and separate toilet.

The 'Nibu' building offers modern, up-market architecture and is designed to create a quiet oasis in Canberra's central suburb.



Emma Barclay
02 6176 3443

<https://www.carterandcoagents.com.au>