

# CARTER + CO



## 30a Narrambla Terrace Lawson ACT

2  2  2 

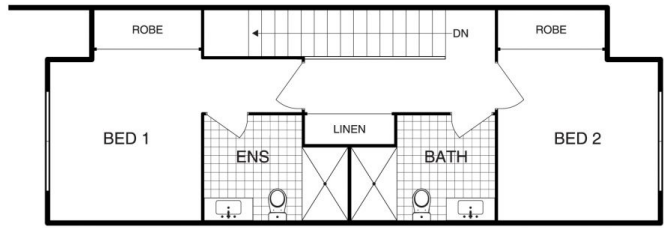
Located in the trendy suburb of Lawson you will find this sophisticated townhouse. The modern design, quality finishes, and unrivalled location will make this home appealing to modern downsizers, first home buyers, and astute investors.

This luxury townhouse provides a sense of size due to the high ceilings and abundance of natural light. Comprising of two separate living areas and an oversized entertaining deck, the home is perfect for entertaining. The bedrooms are large and spacious and overall, the townhouse has a higher build quality than others you will find in the area.

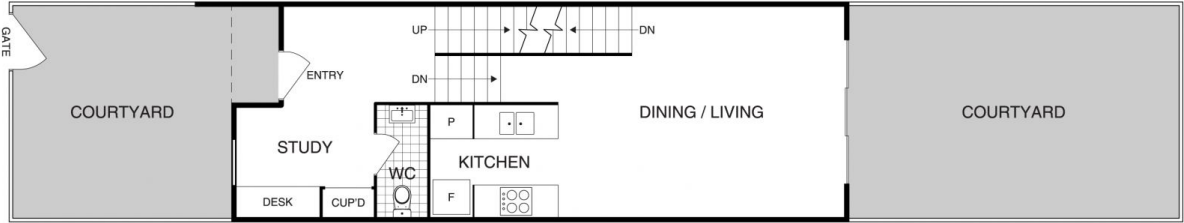
The designer kitchen comes equipped with quality 'Miele' appliances, 40mm stone benchtops with waterfall edges, and soft close drawers. The main bathroom and en-suite bathroom also feature custom-built vanities featuring 20mm

**Price** : \$ 681,000  
**Building Size** : 102.7 sqm  
**View** : <https://www.carterandcoagents.com.au/sale/act/belconnen/lawson/residential/ho use/6611713>

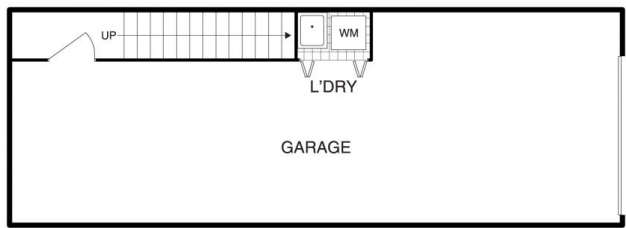
<https://www.carterandcoagents.com.au>



UPPER FLOOR



GROUND FLOOR



LOWER FLOOR