



CARTER + CO



208/27 Lonsdale Street Braddon ACT

3  3  2 

Located in the heart of the rapidly growing Braddon retail precinct, this three-bedroom sub penthouse offers a truly special opportunity.

An architectural masterpiece, Palko is a true flagship of Braddon's transformation - an aesthetically breathtaking building that undeniably offers a new level of unsurpassed luxury. New York-inspired, this boutique development is home to only 47 apartments, all designed to create a unique high-quality living environment.

Features Include:

- Luxurious three-bedroom split level
- Built-in robes to bedrooms
- Built-in desks to bedrooms two and three
- Opulent over-sized master suite

View : <https://www.carterandcoagents.com.au/lease/act/inner-north/braddon/residential/apartment/7085496>



Chloe Stanojevic
02 6176 3443



Emma Barclay
02 6176 3443

PAIKO APARTMENTS

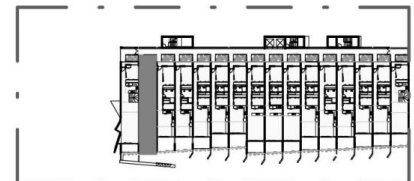
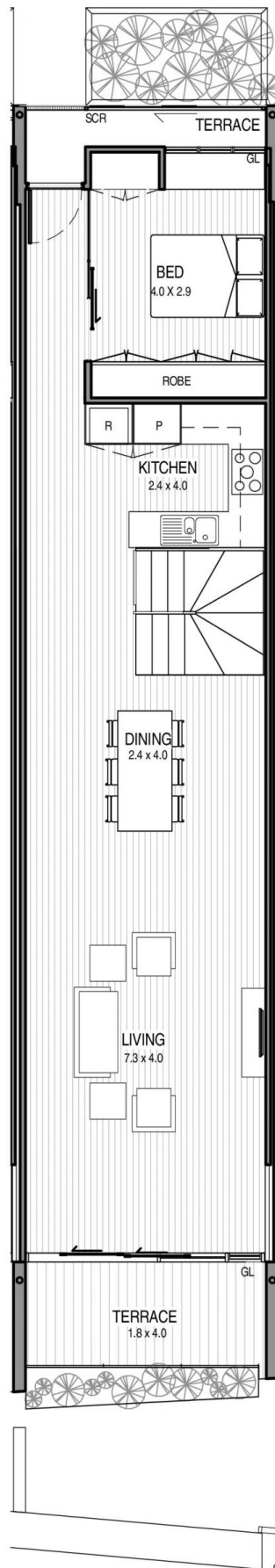
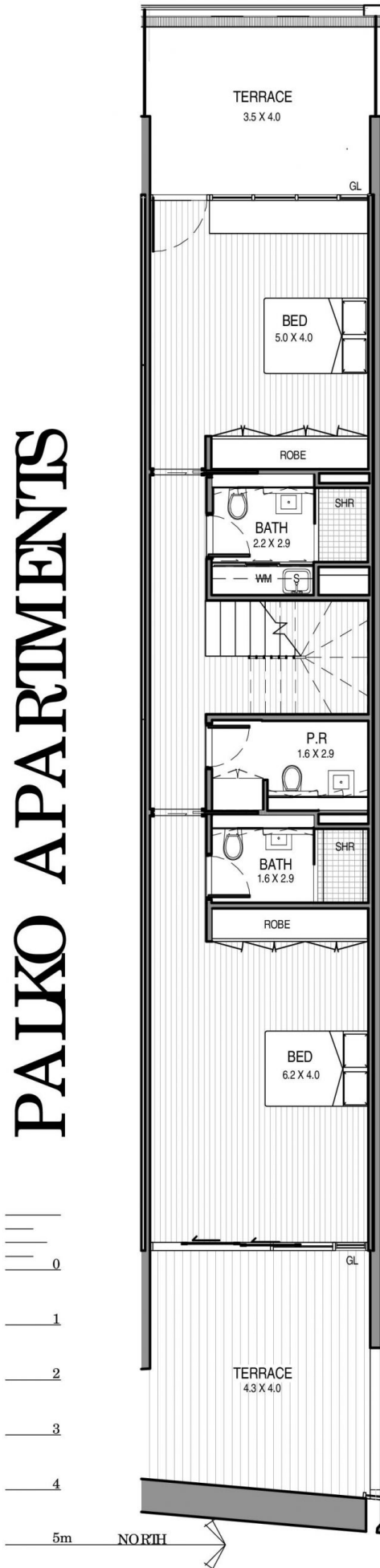
25-29 LO NSDALE ST
BRADDON ACT

HINTON +
nathan gibson judd architect

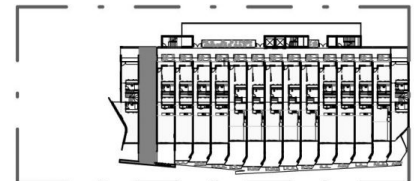
UNIT TYPE **R2**
5B

INTERNAL AREA : 150.5m²
PRIVATE OUTDOOR SPACE : 44.5m²
TOTAL : 195m²

- GL : GLASS LOUVRES
- R : REFRIGERATOR
- SCR : PRIVACY SCREEN
- SHR : SHOWER
- S : LAUNDRY SINK
- P : PANTRY
- VS : VERTICAL SLIDING WINDOW
- WM : WASHING MACHINE



LEVEL 3



LEVEL 2

03/12/2014 REVISION: 2

DISCLAIMER:

The area of each unit is calculated to the outside of the external walls and centre of common walls in accordance with ACT/PA Gross Floor Area Guidelines. Areas are rounded to the half square metre.

Dimensions given on the plans are to the face of walls.

Buyers are responsible for verifying and ensuring that the drawings and information obtained from this document is the latest version.

We reserve the right to change the drawings and any information contained in the document.

By accessing or receiving this document you agree to the above terms and conditions.