

CARTER + CO



22 Saltbush Parade Tralee NSW

4  2  2 

The features you want to know!

- + Flexible floor plan allowing a sizable multipurpose area or home theatre
- + Total Internal Living: 191.9 m² (approx.)
- + MasterChef kitchen with stone benchtops, providing a stylish and functional culinary space and walk in pantry.
- + Main Bedroom Ensuited with feature walk through robe
- + North Facing for energy efficiency and enhanced comfort
- + Timber-like flooring (vinyl plank), offering a contemporary and durable flooring solution
- + Ducted reverse cycle heating and cooling for year-round comfort in any season
- + LED lights, providing energy-efficient living
- + BOSCH appliances, ensuring high-quality and reliable performance
- + Floor-to-ceiling tiles in the bathrooms, adding a touch of

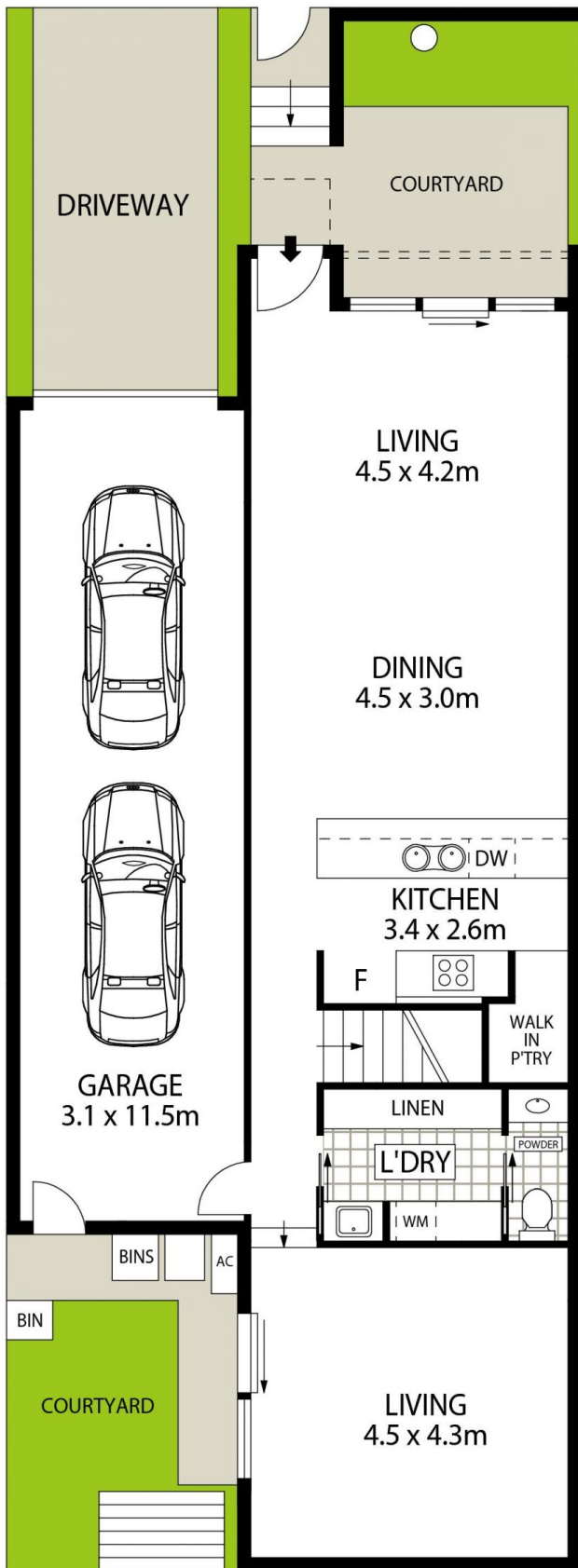
Price : \$900,000-950,000
Building Size : 230 sqm
Land Size : 180 sqm
View : <https://www.carterandcoagents.com.au/sale/nsw/capital-monaro-snowy/tralee/residential/house/7605472>



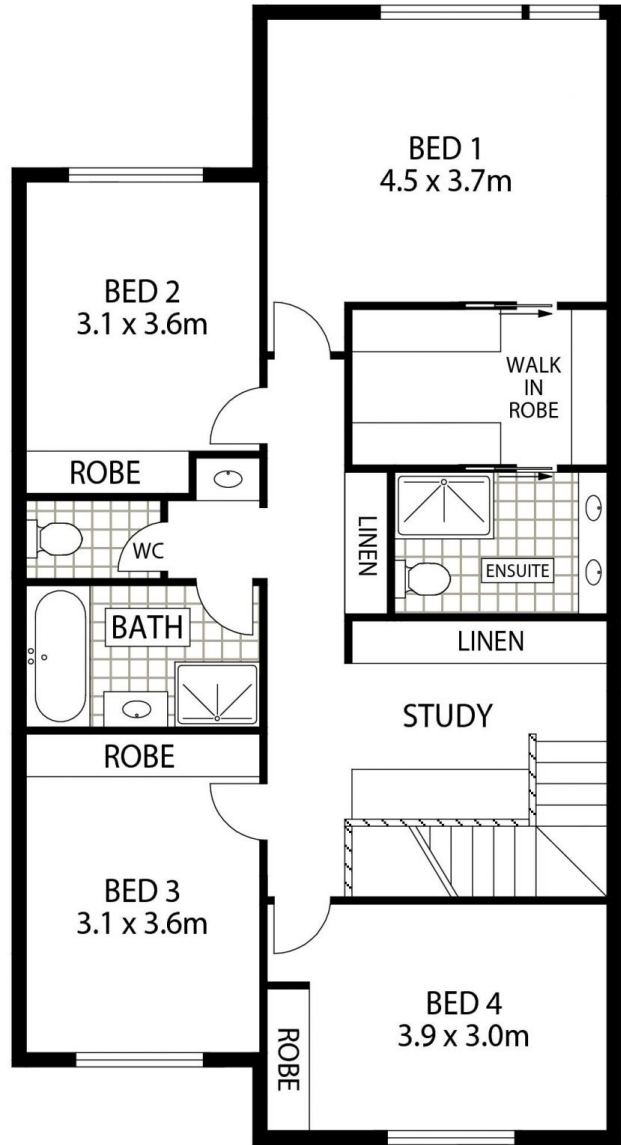
James Carter
02 6176 3443



Alistair Morrell
02 6176 3443



GROUND FLOOR



FIRST FLOOR

APPROX : INTERNAL AREA :- 210 SQM
 APPROX : EXTERNAL AREA :- 50 SQM

Tralee Floor Plans LOT 338

Floor Plan Disclaimer: This floor plan/site plan are intended as an approximate guide only. No representations or warranties of any nature are given or intended and any person using this information other than as a guide should always rely on their own enquiries.