

CARTER + CO



Level 8/124/10 Ipima Street Braddon ACT

1 1 1

North facing with views stretching past Mount Majura, across the leafy patchwork of the Inner North, apartment 124 is located on the 8th floor and feels like a treetop sanctuary nestled in the heart of the CBD. Just minutes on the light rail to Dickson and with the backdrop of Braddon, that's right, you could not be better place for an Inner North lifestyle.

Apartment 124 is fully furnished with a fixed tenancy in place at \$495 per week. This would be a perfect first home, a business landing pad when in Canberra and a fantastic investment for any savvy investor. With modern finishes this apartment certainly fits the bill.

The location is the drawcard, the renewal of the Northbourne Avenue corridor has further enhanced our city centre. With unrivalled proximity to the shopping hubs,

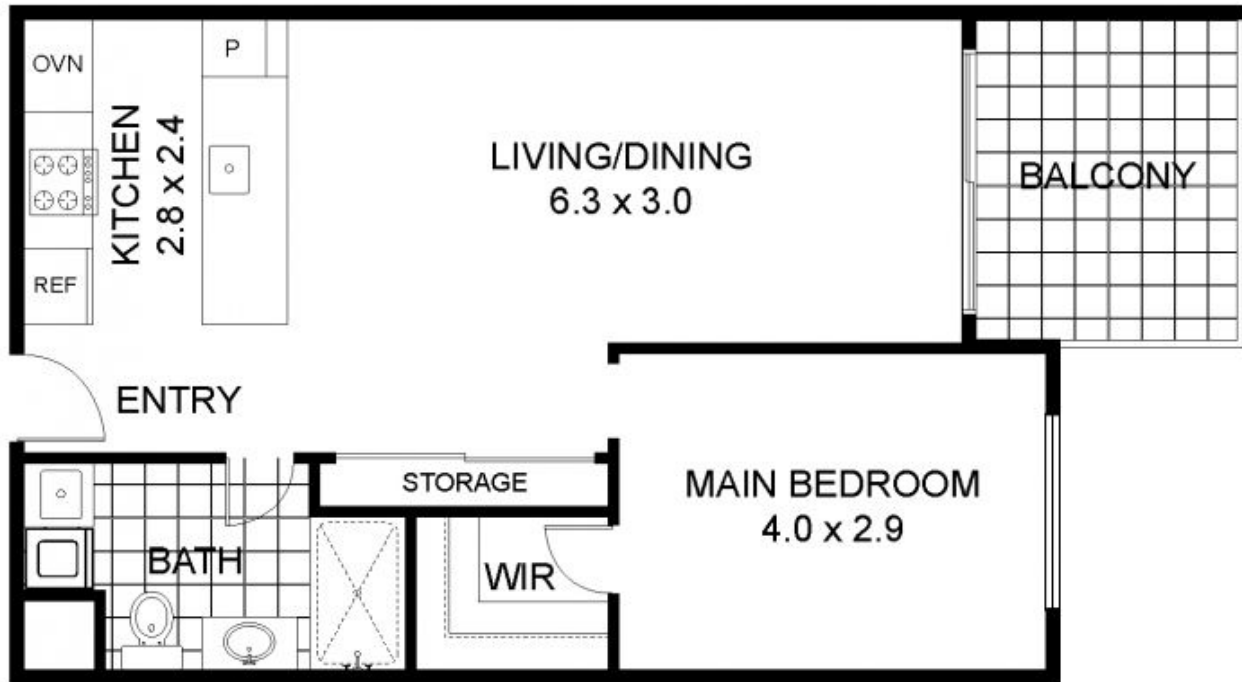
Building Size : 58 sqm
View : <https://www.carterandcoagents.com.au/sale/act/inner-north/braddon/residential/apartment/7707104>



Kim Zarevac
02 6176 3443



Ally Smith
02 6176 3443



Braddon 124-10 Ipima Street

Approx. internal area: 58m²

Approx. external area: 7.6m²

Approx. total area: 65.6m²



Disclaimer: Plans are indicative only and should be checked by the prospective purchaser.
 Plans shown are for presentation purposes and are not part of any legal document. All measurements and figures are approximate.
 The information herein is gathered from sources we believe to be reliable.