

CARTER + CO



15/5 Cynthia Teague Crescent Greenway ACT

1  1  1 

Designed by renowned local Canberra Architect, Terry Ring and built by Canberra powerhouse, Project Coordination an apartment of this calibre is a rare opportunity. Positioned on the fourth floor with lake views and flooded with sunlight from the Northern aspect. Apartments in this development (Essence Greenway) are tightly held and are seldom on the market, this is the first 1 bedroom apartment available since construction was completed in 2018.

Internally, this home features 62.5m² of functional internal living space with a spacious living and dining area that flows through to the balcony. The Bedroom features a walk in robe that flows through to the ensuite.

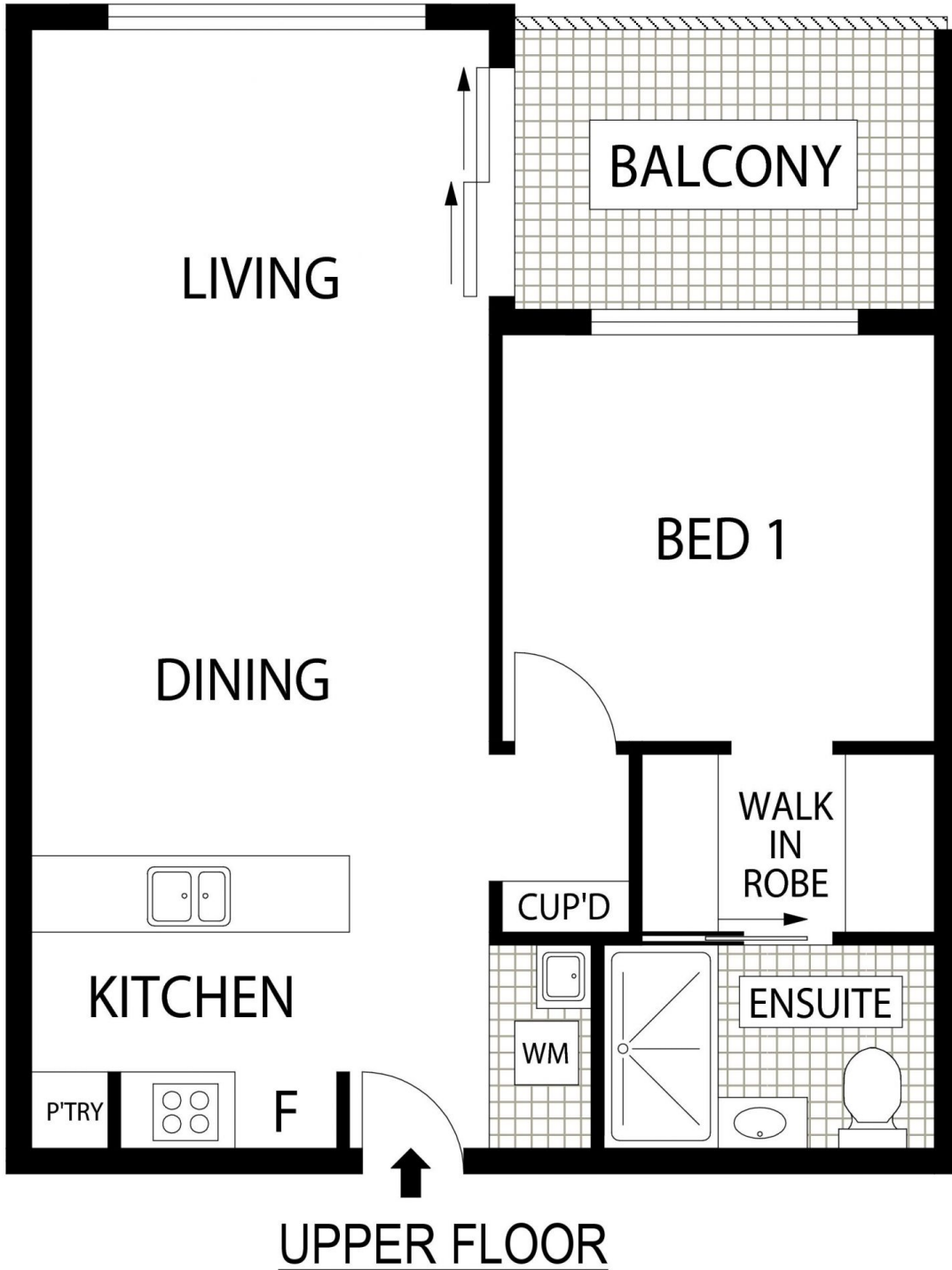
The property is currently on a month to month lease at \$450 per week. With flexible settlement terms available be

Price : \$ 450,000

View : <https://www.carterandcoagents.com.au/sale/act/tuggeranong/greenway/residential/unit/7715529>



Sam Howes
02 6176 3443



15/5 Cynthia Teague, Crescent

Floor Plan Disclaimer: This floor plan/site plan are intended as an approximate guide only. No representations or warranties of any nature are given or intended and any person using this information other than as a guide should always rely on their own enquiries.