




# CARTER + CO



25 Baas Becking Street Whitlam ACT

4  2  2 

The features you want to know!

- + Designer four-bedroom family home with a functional floorplan
- + Open plan living and dining area, with additional segregated living room
- + Premium Tarrazzo tiles
- + 60mm stone benchtops with waterfall
- + Bosch 600mm electric built-in oven
- + Bosch 900mm induction cooktop
- + Bosch integrated rangehood
- + Bosch fully integrated dishwasher
- + Expansive walk-in-pantry
- + Soft close doors and full extension drawers
- + Master bedroom with walk-in-robe, ensuite and direct access to alfresco
- + Three other bedrooms with built-in-robos

**Building Size** : 277 sqm  
**Land Size** : 491 sqm  
**View** : <https://www.carterandcoagents.com.au/sale/act/molonglo-valleyweston-district/whitlam/residential/house/7797813>

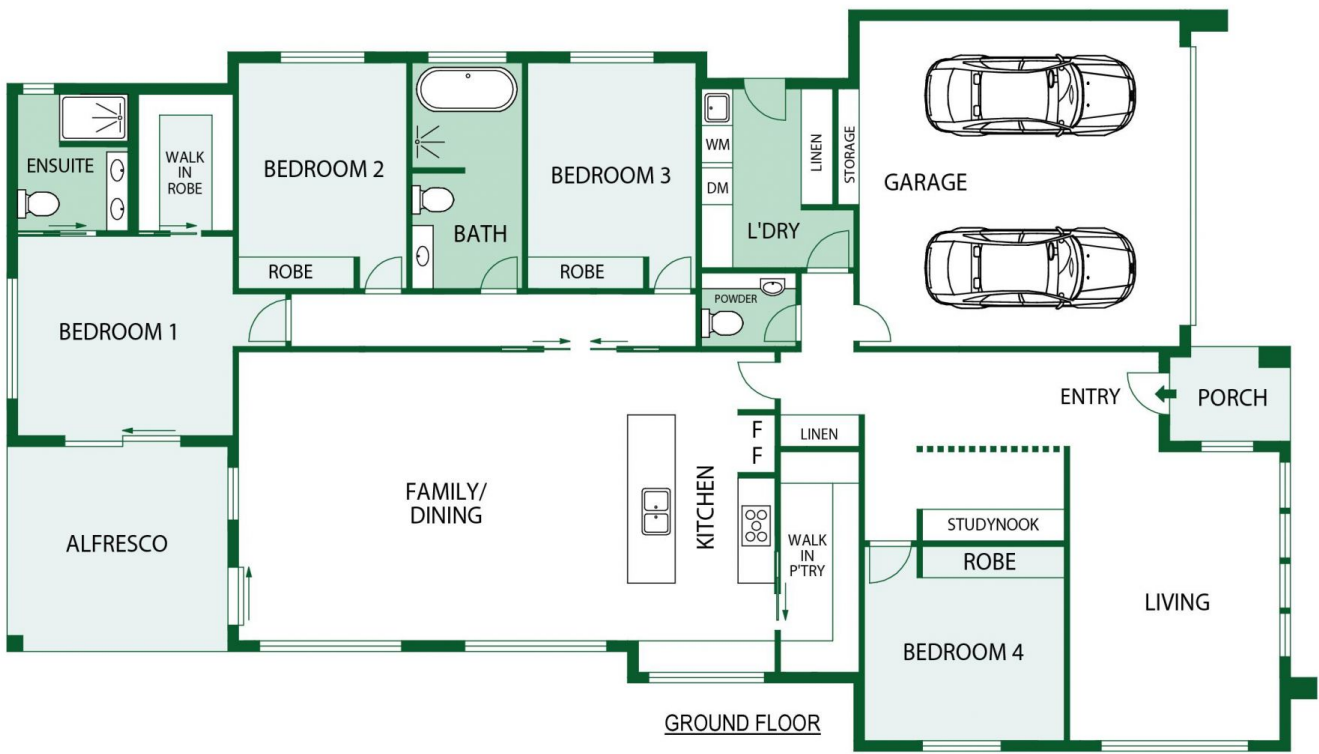


**Keeley Gillespie**  
0426 266 226



**James Carter And Nik Brozini**  
02 6176 3443

<https://www.carterandcoagents.com.au>



**25 Baas Becking Street, Whitlam**

**Floor Plan Disclaimer:** This floor plan/site plan are intended as an approximate guide only. No representations or warranties of any nature are given or intended and any person using this information other than as a guide should always rely on their own enquiries.