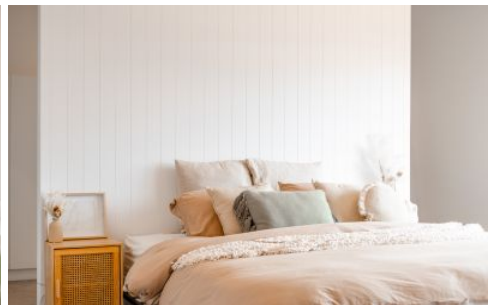
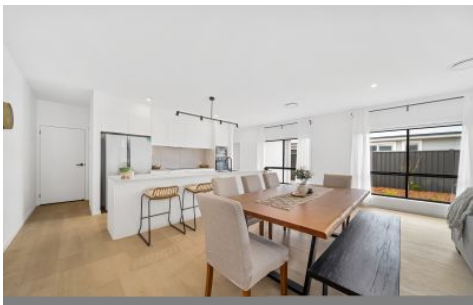


CARTER + CO



11 Rosella Place Bungendore NSW

5 2 2

The features you want to know!

- + Huge light filled living and dining area
- + Large formal north facing lounge room
- + Study Nook with built in desk and drawers
- + 4 double bedrooms with built in robes & roller blinds
- + Ducted reverse cycle air-conditioning
- + Engineered timber flooring in living areas
- + Large main bathroom freestanding bath
- + King sized master bedroom, large walk-through robe, ceiling fan
- + Ensuite with double vanity, featuring vj board, double arch mirrors and double shower rose
- + Large family sized kitchen with huge island bench
- + Stone benchtops, large fridge box and over oven microwave box
- + Big dry butlers pantry with plenty of shelving and

Price : \$ 1,225,000
Building Size : 290 sqm
Land Size : 1001 sqm
View : <https://www.carterandcoagents.com.au/sale/nsw/capital-monaro-snowy/bungendore/residential/house/7807708>



James Carter
02 6176 3443



Ally Smith
02 6176 3443

<https://www.carterandcoagents.com.au>



11 Rosella Place, Bungendore

Approx. total area: 290.5m²



*Disclaimer: Plans are indicative only and should be checked by the prospective purchaser.
Plans shown are for presentation purposes and are not part of any legal document. All measurements and figures are approximate.
The information herein is gathered from sources we believe to be reliable.*

