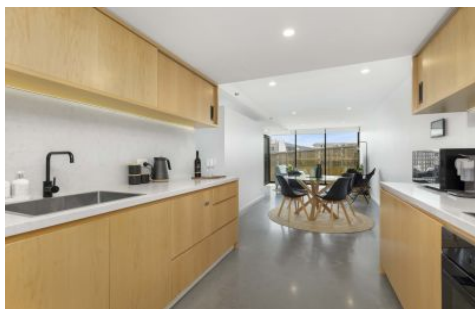


CARTER + CO



502/27 Lonsdale St Braddon ACT

1 1 1

This is an incredible opportunity to live a vibrant lifestyle like no other. Located in the ever popular, unique, and sought after NIBU building, the amenities on your doorstep provide the ultimate lifestyle.

Your new home is just a short stroll to all the incredible luxuries that Lonsdale Street and inner city living has to offer. Modern and contemporary in design and fully furnished, this apartment is ready for you to make home.

Located on level 5, this apartment presents wonderful functionality and flow. Indoor outdoor living is achieved with ease, with an incredible designer kitchen overlooking the adjacent living and dining areas, extending to a private balcony with dual access. The kitchen features 60mm marble bench tops, quality appliances and ample pantry and bench space.

View : <https://www.carterandcoagents.com.au/lease/act/inner-north/braddon/residential/apartment/7899035>



Alissa Davis
02 6176 3443

<https://www.carterandcoagents.com.au>