

CARTER + CO



7 Laird Crescent Forde ACT

4 3 2

Nestled along the tranquil shores of Laird Crescent Pond and parkland, discover this impeccable residence with views across the Pond from most areas of the front of the home, creating a serene backdrop for everyday living.

Large windows throughout the property flood the interiors with natural light, enhancing the sense of space and connection to the picturesque surroundings.

Four generously-sized bedrooms, including a downstairs bedroom with ensuite and robe for added convenience. For additional comfort, a spacious powder room is also located downstairs.

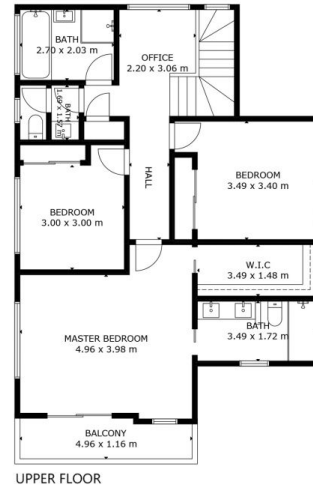
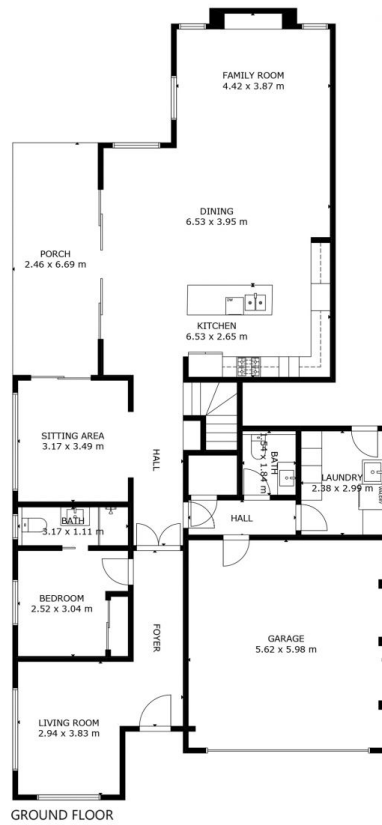
The oversized kitchen is a chef's delight, boasting a walk-in pantry, ample self-closing cupboards and drawers, a 40mm stone benchtop and a large island bench with a stunning

Building Size : 292 sqm
Land Size : 388 sqm
View : <https://www.carterandcoagents.com.au/sale/act/gungahlin/forde/residential/house/7941781>



Maria Selleck
02 6176 3443

<https://www.carterandcoagents.com.au>



7 Laird Crescent, Forde

Approx. total area: 219m² 

Disclaimer: Plans are indicative only and should be checked by the prospective purchaser. Plans shown are for presentation purposes and are not part of any legal document. All measurements and figures are approximate. The information herein is gathered from sources we believe to be reliable.

