

CARTER + CO



18 Red Path Terrace Whitlam ACT

6 4 2

The features you want to know!

Main House

- + 4 Centrally located Bedrooms, 3 with built-in-robos
- + Master bedroom with walk-in-robe, ensuite and balcony with stunning views
- + Second master bedroom with built-in-robe, ensuite and balcony with stunning views
- + 4 Bathrooms with floor to ceiling and high end fixtures and fittings
- + Rumpus room centrally positioned upstairs
- + 2 Separate living spaces downstairs
- + Large open kitchen with breakfast bar and ample storage

- + Electric oven and stove top
- + Ceiling fans in all bedrooms

Price : \$1,320,000
Building Size : 263 sqm
Land Size : 262 sqm
View : <https://www.carterandcoagents.com.au/sale/act/molonglo-valleyweston-district/whitlam/residential/house/7948549>

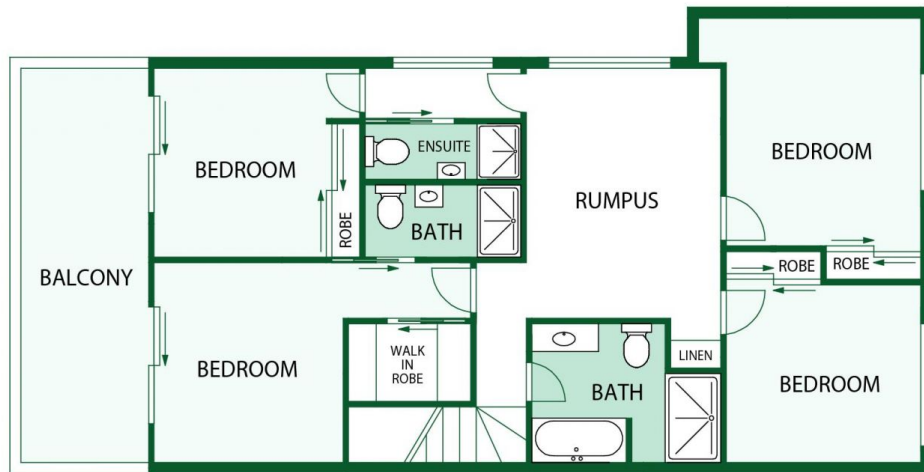


James Carter
02 6176 3443

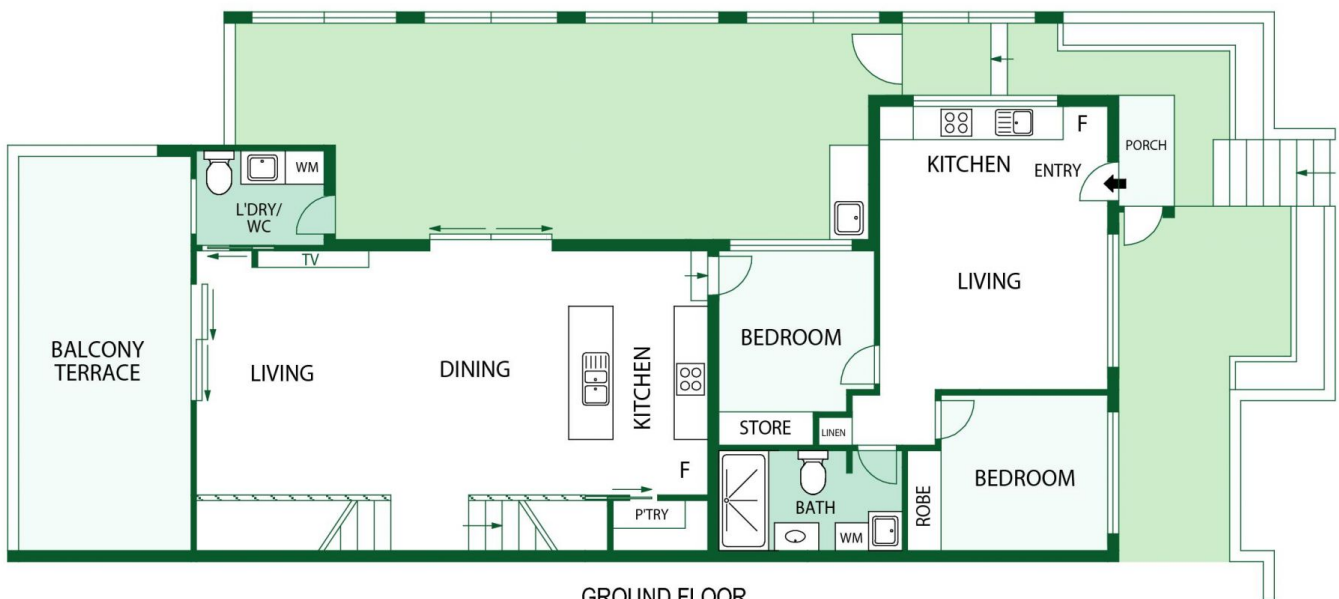


Alistair Morrell
02 6176 3443

<https://www.carterandcoagents.com.au>



UPPER FLOOR



GROUND FLOOR



18 Redpath terrace, Whitlam

Floor Plan Disclaimer: This floor plan/site plan are intended as an approximate guide only. No representations or warranties of any nature are given or intended and any person using this information other than as a guide should always rely on their own enquiries.