

CARTER + CO



10/1 Edwell Place Lyneham ACT

2 1 2

Nestled in a small enclave adjacent to a picturesque nature reserve, discover this tastefully renovated single-level townhouse offering two bedrooms and bathed in natural light. Upon entry, you'll be greeted by the inviting ambiance and practical layout, promising a lifestyle of ease and comfort.

The heart of the home boasts a spacious open-plan living area seamlessly connected to a stylishly renovated kitchen featuring quality appliances, ample storage, and generous countertop space (for a two bedroom townhouse). The well-appointed bedrooms, each with built-in robes, flank a renovated bathroom adorned with floor-to-ceiling tiles and high-quality fixtures.

Step outside to your private courtyard, a sun-soaked retreat ideal for unwinding amidst tranquillity. With a single carport, an additional parking space, and a lockable storage shed, convenience is at your fingertips. Plus, visitor parking adds

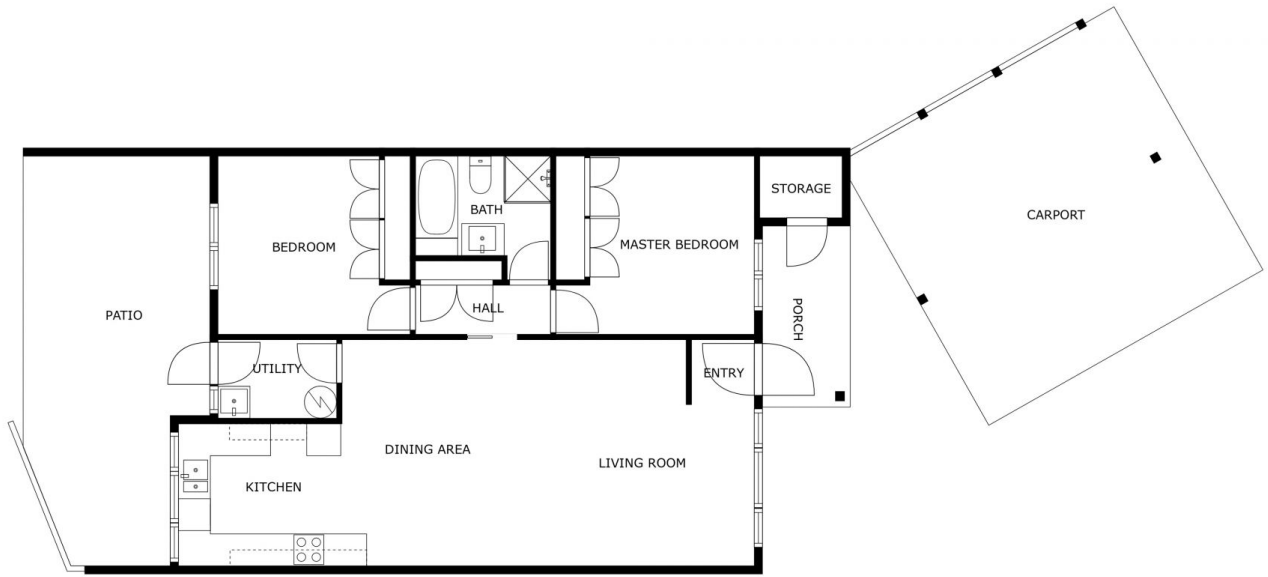
Price : Offers over \$635,000
Building Size : 86 sqm
View : <https://www.carterandcoagents.com.au/sale/act/inner-north/lyneham/residential/townhouse/7993426>



Kim Zarevac
02 6176 3443



Ally Smith
02 6176 3443



10/1 Edwell Place, Lyneham



Disclaimer: Plans are indicative only and should be checked by the prospective purchaser. Plans shown are for presentation purposes and are not part of any legal document. All measurements and figures are approximate. The information herein is gathered from sources we believe to be reliable.

aperture
REAL ESTATE