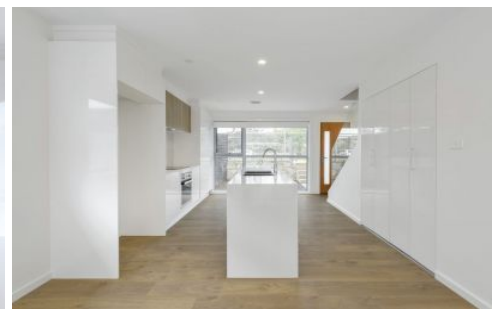


CARTER + CO



10/10 Ellison Harvie Close Greenway ACT

3  2  2 

This stunning townhouse presents an excellent opportunity to secure modern, light filled living within walking distance of Tuggeranong's SouthPoint shopping centre.

Positioned on the edge of Lake Tuggeranong, with immediate access to the lake and just a short stroll from popular local Cafe's and restaurants.

Features include:

- Modern, 2 level townhouse
- Split System Air Conditioning
- Induction Cooktop
- Floor to ceiling tiling to bathrooms

[For full version visit the website](#)

Type : Townhouse

View : <https://www.carterandcoagents.com.au/lease/act/tuggeranong/greenway/residential/townhouse/8048983>



Charissa Turbin
02 6176 3443



■ GROUND FLOOR PLAN



■ FIRST FLOOR PLAN

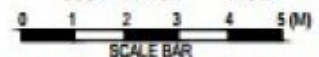


■ UNIT 10 - BLOCK B

GROUND FLOOR	56.0 m ²
FIRST FLOOR	59.5 m ²
CARSPACES	26.0 m ²
STORE	01.5 m ²

TOTAL AREA 143.0 m²

COURTYARD 01	16.3 m ²
COURTYARD 02	27.0 m ²



3 BEDROOM TOWNHOUSE - 2 CARSPACES