

CARTER + CO



34/10 Ellison Harvie Close Greenway ACT

3  2  2 

With Lake Tuggeranong at your doorstep, walking, running and cycling are an easy fit to your daily routine. Pop across the bridge and grab a coffee at 'Two Before Ten' on the water or stroll into SouthPoint centre for brunch. It's easy to see why this complex is called 'Waters Edge'.

Split over two levels, this light filled home offers spacious open plan living, three large bedrooms with built in robes, an ensuite and main bathroom with tub, and a covered courtyard.

Features include:

- Double lock up garage located in secure basement
- Covered courtyard with lake views

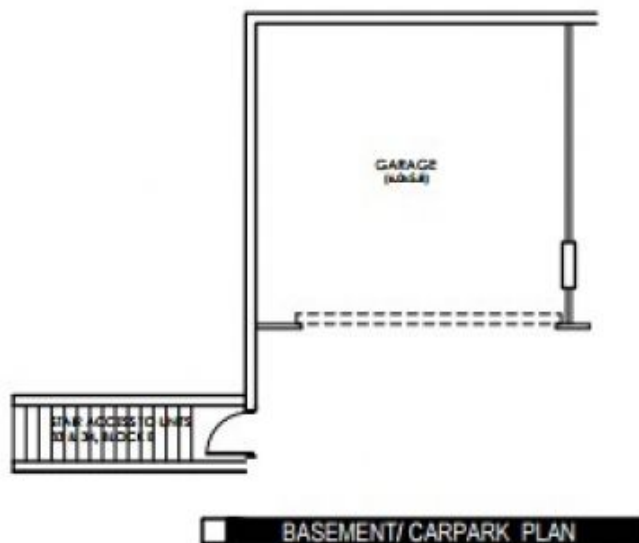
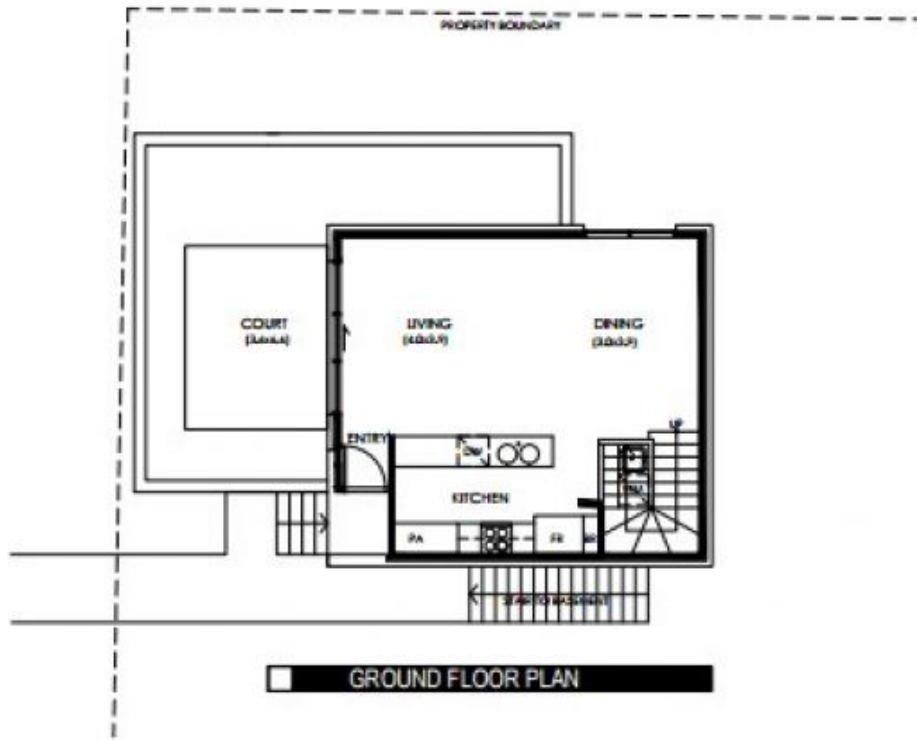
[For full version visit the website](#)

Type : Townhouse

View : <https://www.carterandcoagents.com.au/lease/act/tuggeranong/greenway/residential/townhouse/8051404>



Charissa Turbin
02 6176 3443



UNIT 34 - BLOCK E

GROUND FLOOR	48.7 m ²
FIRST FLOOR	56.1 m ²
GARAGE	38.0 m ²
TOTAL AREA	142.8 m²
COURTYARD	34.0 m ²



3 BEDROOM TOWNHOUSE - DOUBLE GARAG