




CARTER + CO



12/1 Cynthea Teague Crescent Greenway ACT

2  1  1 

THE FEATURES YOU WANT TO KNOW!

- + Northern aspect with lake and parkland views
- + Large master bedroom with large built in robe
- + Floor to ceiling bathroom tiles 300mm x 600mm, with feature wall
- + Ariston appliances: Ceramic glass cooktop, oven, range hood, dishwasher & dryer
- + Double glazed windows and doors
- + 1 secure car space with close access to the lift
- + Conveniently placed storage unit
- + Boutique development of only 62 apartments and 2 commercial units

WHY YOU WANT TO LIVE HERE!

[For full version visit the website](https://www.carterandcoagents.com.au/sale/act/tuggeranong/greenway/residential/apartment/8081108)

Type : Apartment
Building Size : 63 sqm
View : <https://www.carterandcoagents.com.au/sale/act/tuggeranong/greenway/residential/apartment/8081108>

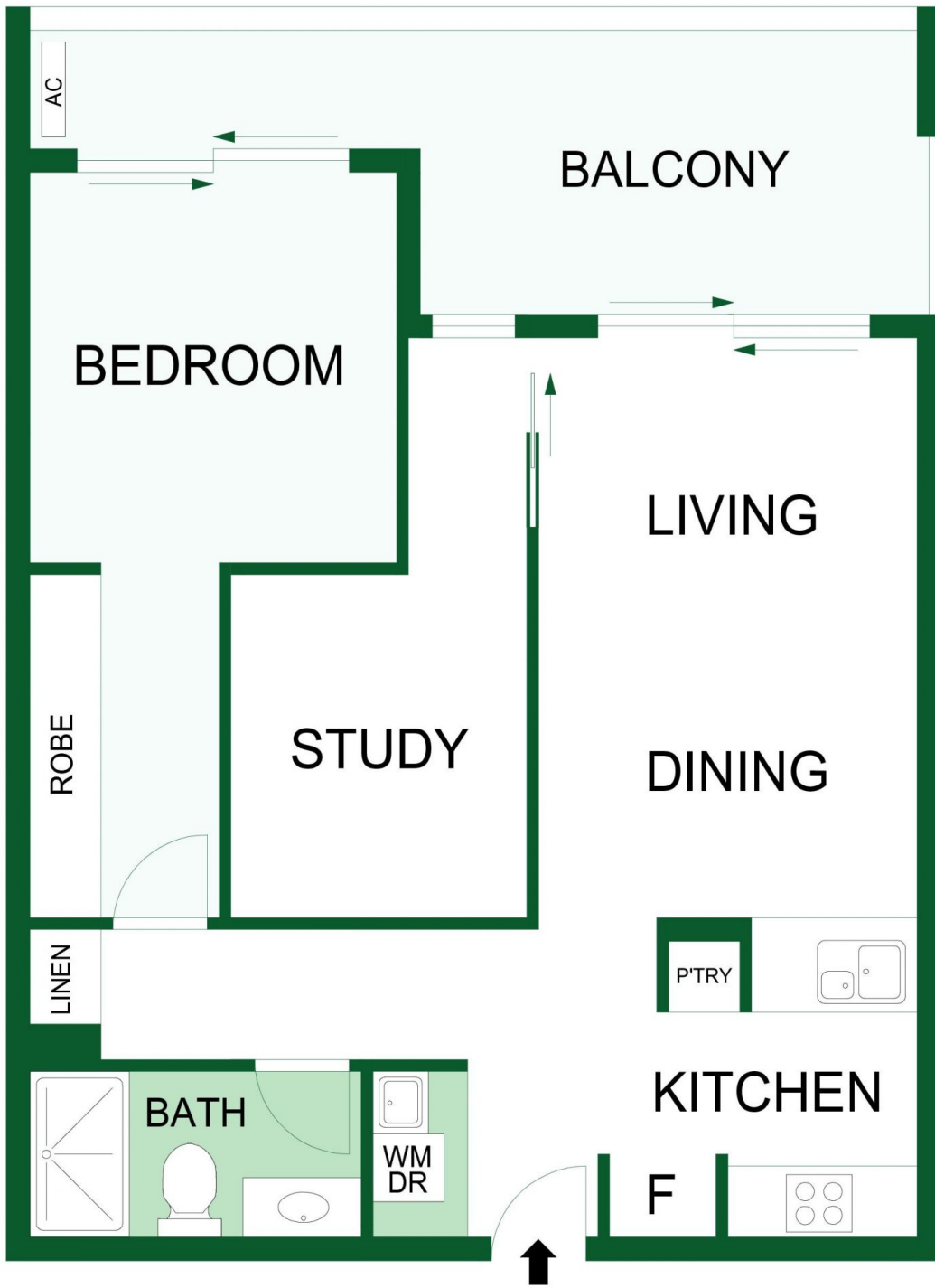


Alistair Morrell
02 6176 3443



Sam Howes
02 6176 3443

<https://www.carterandcoagents.com.au>



UPPER FLOOR



12/1 Cynthea Teague Crescent, Greenway

Floor Plan Disclaimer: This floor plan/site plan are intended as an approximate guide only. No representations or warranties of any nature are given or intended and any person using this information other than as a guide should always rely on their own enquiries.