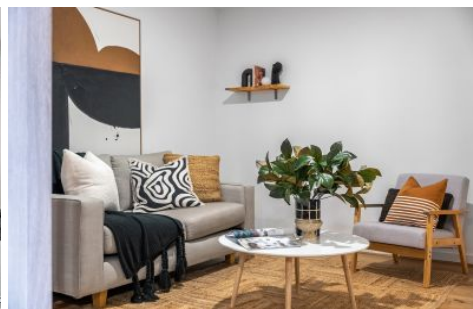


CARTER + CO



725/1 Elouera Street Braddon ACT

2 2 2

The Features You Want To Know.

- + Executive Two Bedroom, Two Bathrooms on the Seventh floor of the "Midnight" Complex
- + East-Facing towards Mount Ainslie with an abundance of natural light.
- + Open plan kitchen, living and dining area
- + High-quality appliances including, Bosch Dishwasher, Smeg Oven, and Westinghouse cooktop
- + Brand new floorboards throughout living area
- + Separate living/media room upon entry
- + Master Bedroom with walk-in robe, ensuite, and private balcony
- + Bedroom two with built-in robe
- + Bathroom features wall-to-ceiling tiles and wall-mounted

[For full version visit the website](https://www.carterandcoagents.com.au/sale/act/inner-north/braddon/residential/apartment/8191807)

Type : Apartment
Price : \$ 765,000
Building Size : 112 sqm
View : <https://www.carterandcoagents.com.au/sale/act/inner-north/braddon/residential/apartment/8191807>

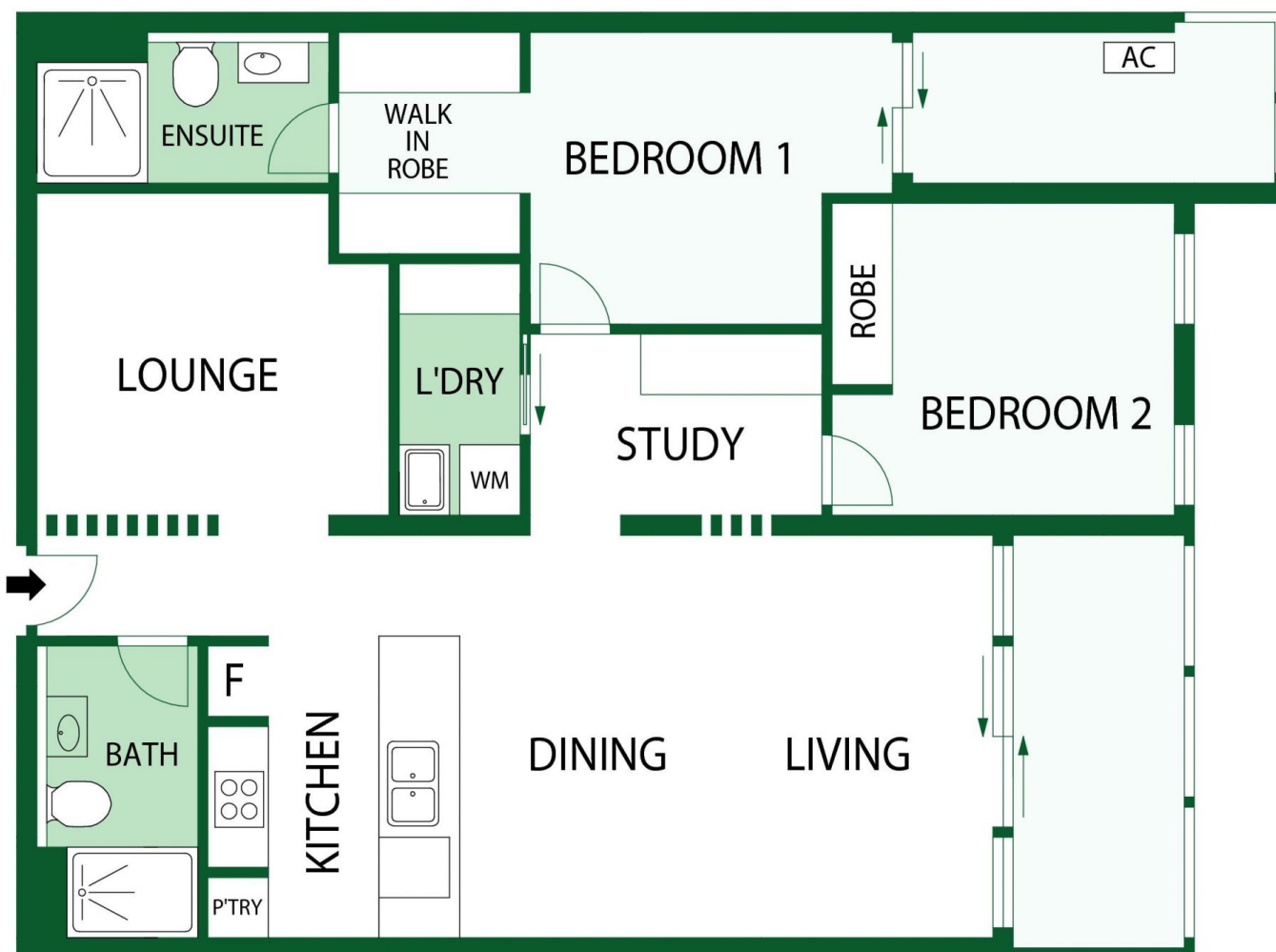


Nik Brozinic
02 6176 3443



Frances Junakovic
02 6176 3443

<https://www.carterandcoagents.com.au>



LEVEL SEVEN



725/1 Elouera Street, Braddon

Floor Plan Disclaimer: This floor plan/site plan are intended as an approximate guide only. No representations or warranties of any nature are given or intended and any person using this information other than as a guide should always rely on their own enquiries.