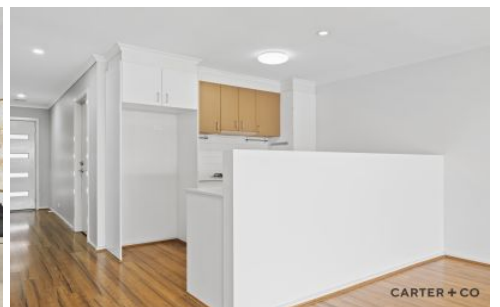


CARTER + CO



42 John Crawford Crescent Casey ACT

2 2 1

Why You Want To Live Here.

Nestled within the heart of Casey and exuding modern charm, 42 John Crawford Crescent presents an unmissable opportunity for first-time buyers and savvy investors alike. This delightful two-bedroom house, free from the confines of body corporate, sits on a manageable plot of 205 square metres and is perfectly positioned for convenience and lifestyle.

Step inside to discover a bright, open plan living and dining area, illuminated by a skylight and offering seamless access to the low maintenance rear courtyard-ideal for alfresco relaxation or entertaining. The well-appointed kitchen is sure to impress with its stone benchtops, ample storage solutions and a suite of quality appliances,

[For full version visit the website](https://www.carterandcoagents.com.au/sale/act/gungahlin/casey/residential/house/8229294)

Type : House
Land Size : 205 sqm
View : <https://www.carterandcoagents.com.au/sale/act/gungahlin/casey/residential/house/8229294>



Shan Gao
02 6176 3443



Curtis Dong
02 6176 3443

