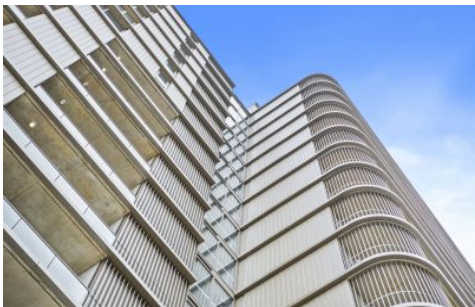


CARTER + CO



713/1 Corinna Street Phillip ACT

1 1 1

Why You Want To Live Here.

Welcome to The Melrose, a beacon of contemporary elegance—a perfect abode for first home buyers, savvy investors, and those looking to downsize without compromise. This brand new, one-bedroom apartment sits proudly on the 7th floor, offering breathtaking panoramic views that epitomise luxury living in the heart of the ACT.

The open-plan living, dining, and kitchen space flows seamlessly, accentuated by stone benchtops, custom joinery, and an abundance of storage. The quality SMEG appliances, including an induction cooktop, oven, and semi-integrated dishwasher, complement the functional elegance of the space, while soft-close drawers and cupboards add an extra touch of sophistication.

Type : Apartment

View : <https://www.carterandcoagents.com.au/sale/act/woden-valley/philip/residential/apartment/8256403>



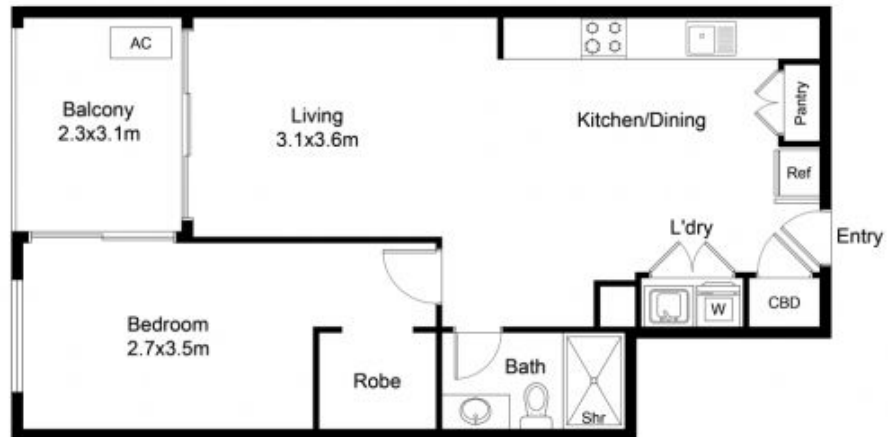
Curtis Dong
02 6176 3443



Shan Gao
02 6176 3443

[For full version visit the website](#)

<https://www.carterandcoagents.com.au>



This floor plan including furniture, fixture measurements and dimensions are approximate and for illustrative purposes only. BoxBrownie.com gives no guarantee, warranty or representation as to the accuracy and layout. All enquiries must be directed to the agent, vendor or party representing this floor plan.

713/1 Corinna Street Phillip ACT 2612